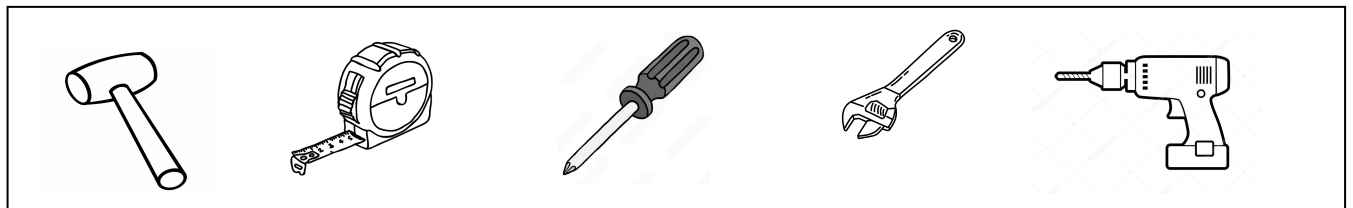


IronSlide Kit from Tennessee Barn Doors.

Thank you for your purchase of an IronSlide kit from Tennessee Barn Doors

These step-by-step instructions will help your to create a stunning barn door for your home.

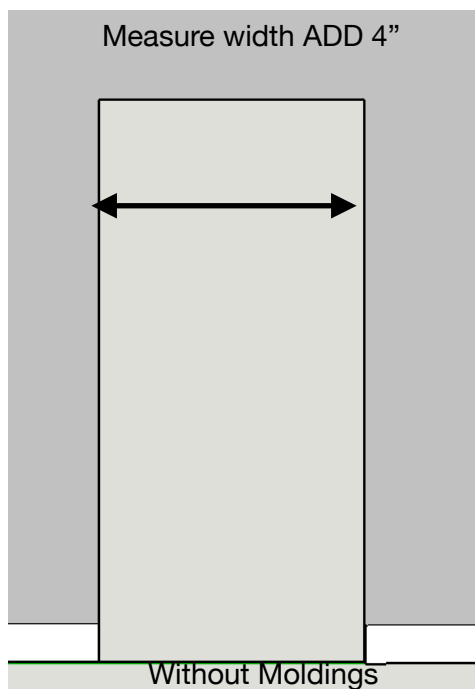
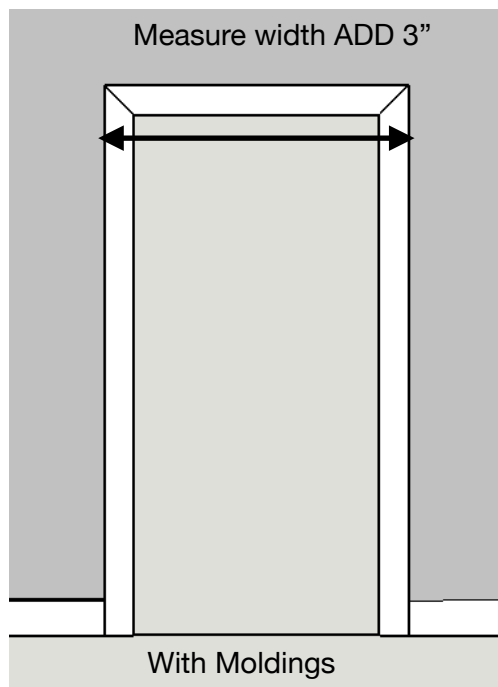
Tools you may need (if you are using your own wood you may need saws etc depending on your wood)



WOOD:

If you purchased a complete kit from us the wood (tongue and groove) is already cut to the proper width.

IF you are using your own wood it is highly recommended you choose a (tongue and groove) product and the THICKNESS of your wood needs to be 3/4". The width of your wood should equal the door width size. See how to determine door width below.

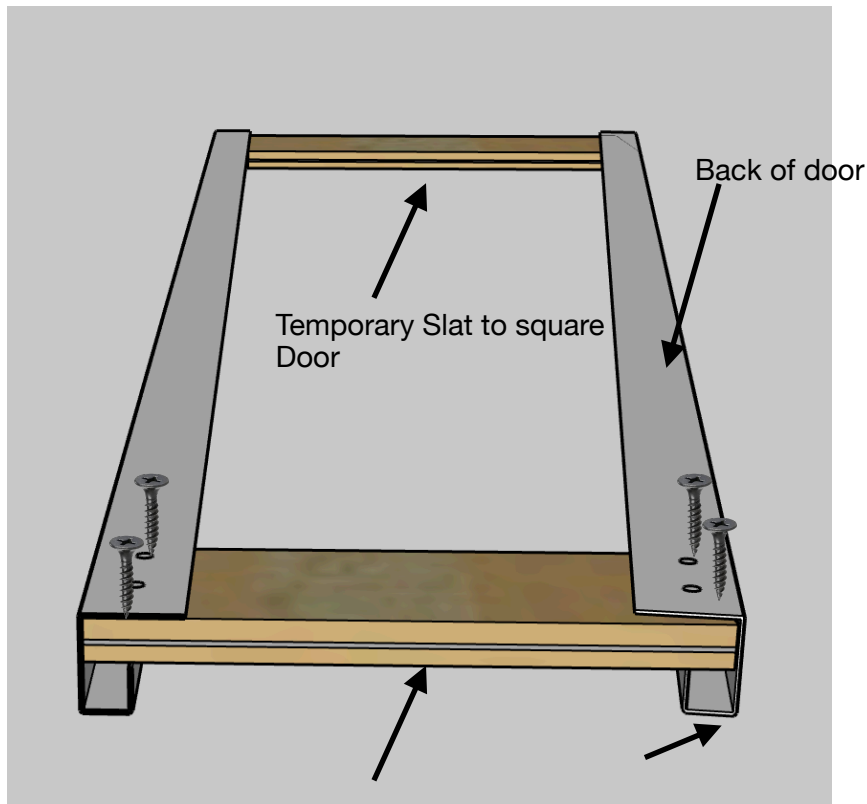


STEP 1:

Cut your wood to the correct width. Depending on your slate sizes have enough cut when joined will fill to the full height of your door. Optional is to paint or stain your wood at this point.

STEP 2:

Slide your first piece of wood into both frame parts all the way to the bottom of the door. Ensure frame parts are square and wood is completely seated into frame (adding a second slat wood piece at top of frame can help square the frame). Once bottom board is screwed remove temporary top board.



STEP 3:

Use the (4) 5/8" x #8 black wood screws and secure bottom board through holes provided. (If you are not using tongue and groove you may have to drill new holes through the metal frame for added support)

STEP 4:

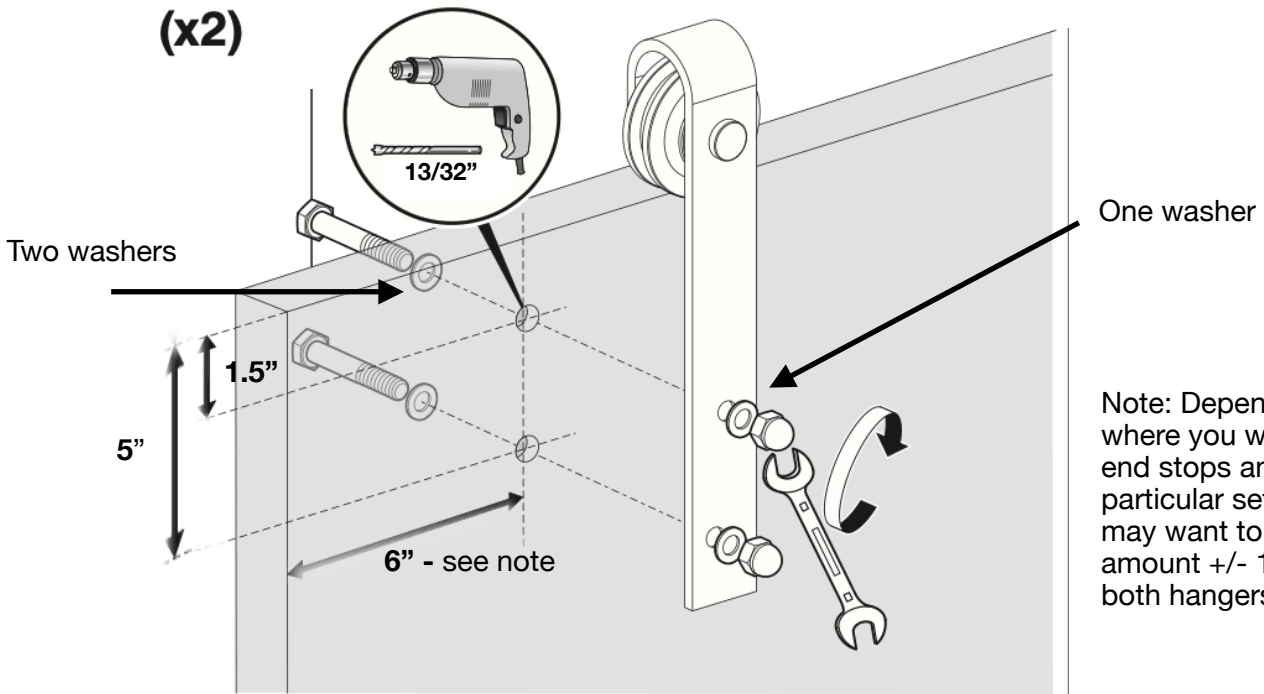
Slide from the top the next slat (rubber mallet may be required) all the way to the first (lowest) slat and make sure Tongue and groove join. IT IS CRITICAL that the Tongue and Groove is fit tight by using a rubber mallet. Continue with more slats until door is at final height. (If using your own wood the final slat may has to be ripped to fit to eat final height)d. If we supply the wood the last slat will be marked "top" and the second to last slat will have holes (for hardware pre drilled)

STEP 5:

Secure last slat (top of door) with (4) 5/8" x #8 black wood screws through holes provided.

ATTACH HARDWARE

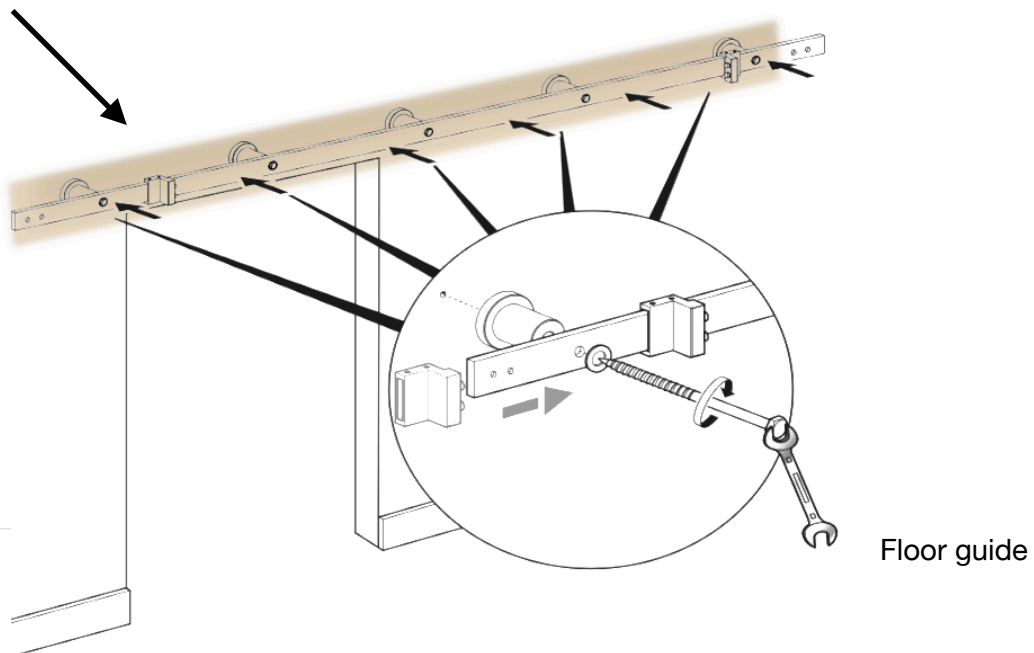
NOTE: IF WE SUPPLY WOOD THE HARDWARE HOLES ARE PRE DRILLED FOR YOU



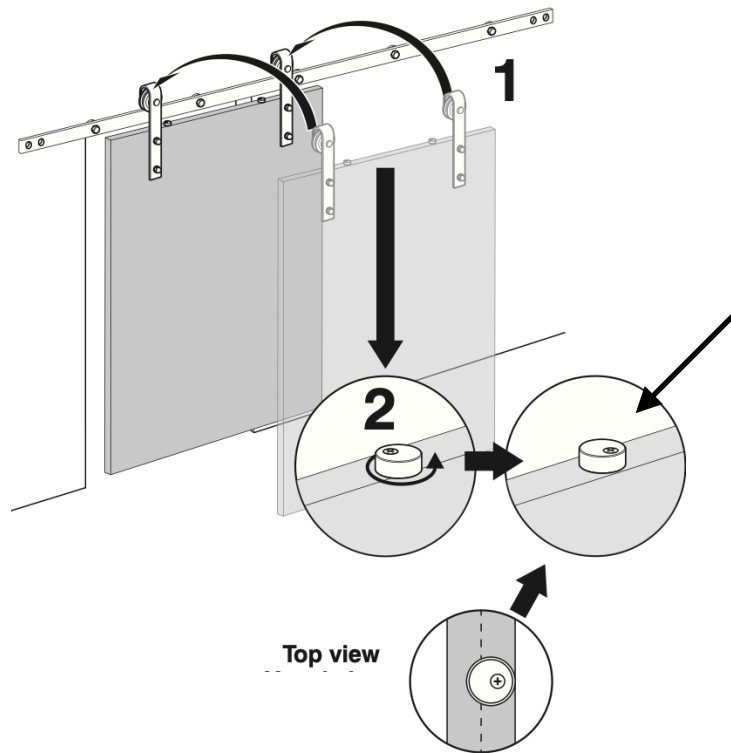
ATTACH RAIL TO WALL

Typically a wood 1x4 is added to the wall and screwed to the studs then the rail is attached to this 1x4

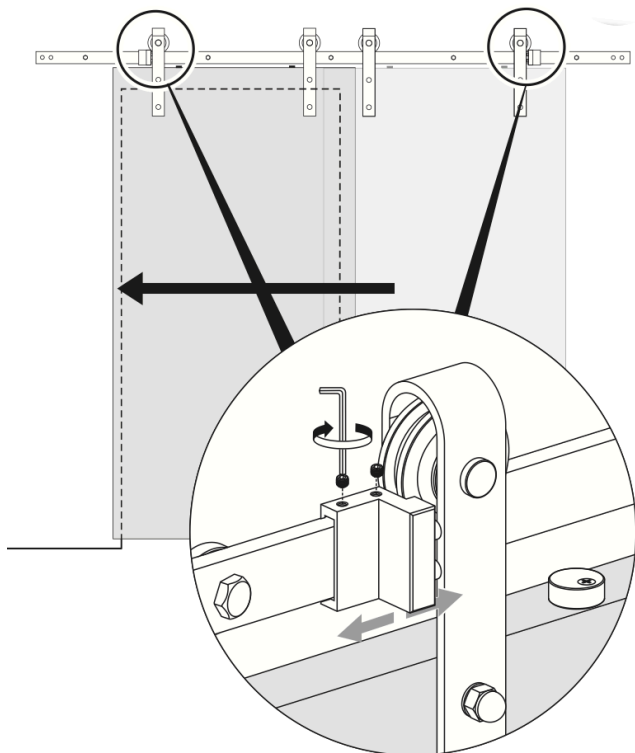
Video: We HIGHLY recommend you view the install video at bit.ly/3ZEbfAS or scan code below



HANG DOOR



SET END STOPS



FOOR GUIIDE

